



**G O L D W I N G**

**G O B E Y O N D**



EXPERIENCE

# ENDLESS FREEDOM

This is where it all begins. A whole new world of endless freedom is out there, just waiting to be discovered — creating everlasting memories forever etched into your mind. It's in our nature to explore what lies beyond, to seek the unexpected and to experience life in the most vivid ways imaginable — one great ride at a time.

IT'S 1975: THE LEGEND  
**TAKES FLIGHT**

They say timeless things never get old. Since making its debut back in 1975, the original Honda Gold Wing — known then as the Honda GL1000 — played a major role in establishing the motorcycle touring category. The Gold Wing went on to not only set the standard to which all future touring motorcycles continue to be compared to today, but also earn itself a highly coveted reputation among long-distance riders for impeccable luxury, advanced technology and proven performance. Over the years many things sure have changed, but the legendary Gold Wing remains our ultimate performance touring machine, well deserving of its authentic flagship status decades later.



**1975 – GL1000 GOLD WING**

Touring is born. And no one saw it coming. Powered by a 999 cc liquid cooled horizontally opposed four-cylinder engine, the original GL1000 marked a significant shift in moto culture, inspiring an entirely new way to ride.



TODAY, THE LEGEND  
**GOES BEYOND**

Discover the true feeling of freedom with the Honda Gold Wing. Representing one of the greatest achievements in motorcycle touring performance and technology, the Gold Wing is destined to add a new chapter to the ever-evolving Honda legacy. Get ready to experience a legend in the making, known for separating tourists from travellers and turning every ride into a memorable story worth telling.



**1985 – GL1200 GOLD WING LIMITED EDITION**

The Gold Wing's 10-year anniversary saw the end of the naked fairing GL. The luxurious Limited Edition arrived with programed fuel injection, cruise control, auto-levelling suspension, metallic gold paint and comfort features galore, including intercom between rider and passenger.



**1995 – GL1500 GOLD WING 20<sup>TH</sup> ANNIVERSARY**

The Gold Wing did more in its first 20 years than any other bike. Honda celebrated this 20th anniversary with the release of three commemorative models and a special hardcover book detailing its entire history to this point.



**2005 – GL1800 GOLD WING**

For the 30th anniversary, the Gold Wing received multiple new colours and upgrades, followed by the addition of in-dash GPS, heated grips and seats, plus the world's first optional motorcycle airbag in 2006. Yet there was one other major milestone to celebrate: at this point, over 500,000 Gold Wings had been built worldwide.



**2015 – GL1800 GOLD WING 40<sup>TH</sup> ANNIVERSARY**

Back in 1975, no one predicted the Gold Wing would inspire a global fan following spanning over four decades. The 40th anniversary model signified this crowning achievement with special commemorative edition badging and embossed seating, upgraded two-tone paint, new layered surface bodywork and refined touring features alongside its proven 1832 cc six-cylinder engine.



**2018 – GOLD WING TOUR DCT AIRBAG & GOLD WING**

The highly anticipated Gold Wing debuted with a completely new flat six-cylinder engine, electronically controlled suspension, styling with LED lighting and a new removable trunk option. As the most advanced bike in its class, it incorporates more features than ever before, including Apple CarPlay™, 7-inch TFT display, smart key fob and advanced ride technology, plus optional airbag and choice of traditional six-speed manual transmission or advanced seven-speed Dual-Clutch Transmission (DCT).





ICONIC  
**DESIGN**

Blending modern design with iconic attitude, the Gold Wing offers a bold shape along with aggressive styling that refuses to be ignored. Flowing seamlessly from tip to tail — right down to the most meticulous detail — the Gold Wing brings new meaning to aerodynamic efficiency in the touring motorcycle category. The attractive styling has long-distance comfort written all over it, with distinctively bright LED lighting, an adjustable electric windscreen and SiriusXM® satellite radio capability, plus revised ergonomics to make the most of every moment spent riding the open road. The legendary Gold Wing spirit still shines through an impressive choice of new premium colour options and a sharper, more svelte design sensibility—striking the ideal balance between comfort and performance worthy of the Gold Wing name.



**SIRIUSXM®**

SiriusXM® satellite radio antenna specifically designed to interface with your motorcycle (requires SiriusXM® subscription activation to use). Includes 90 days of SiriusXM® All Access Plan on all 2019 models.



**ADVANCED LED LIGHTING**

The LED headlight and rear LED tail light designs help deliver brilliant illumination and distinctive good looks, along with angular mirrors featuring integrated self-cancelling LED turn signals.



**WHEEL DESIGN & TPMS**

The attractive wheel design adds to the overall upscale styling, connecting to the road with a wide 200 series rear tire with standard Tire Pressure Monitoring System (TPMS).



**ADJUSTABLE ELECTRIC WINDSCREEN**

Every touring rider can appreciate the extra wind and weather protection with the integrated and fully adjustable electric-powered windscreen — effortlessly changing height to suit your preference.



**ELECTRONICALLY CONTROLLED SUSPENSION**

Underneath it all is an electronically controlled suspension, allowing for a responsive ride and even better handling. The chassis also contributes to a weight savings of up to 39 kg (85 lb.) from the previous generation.



**ICONIC STYLING**

Front to back, the Gold Wing is reinvented with a lower, swept-back touring design and a strong shoulder line, giving the motorcycle premium styling and frame.



U.S. model shown



## ADVANCED TECHNOLOGY

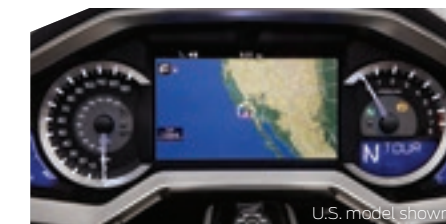
The Gold Wing is a tech-savvy force to be reckoned with. No stranger to innovation, it includes a lengthy list of advanced electronics, connectivity and entertainment, featuring an available motorcycle industry first—Apple CarPlay™ with Siri®. Enjoy seamless Apple CarPlay™ integration with your compatible iPhone®'s navigation, apps, music and additional services, plus convenient access to weather, playlists and phone numbers right at your fingertips. Every Gold Wing and Gold Wing Tour is also equipped with a big, bright 7-inch full-colour screen. The addition of standard Bluetooth® with available Bluetooth headset, standard USB connector and an optional high-output audio system are just a few more of the state-of-the-art surprises that will turn every ride into a great escape.

### STANDARD BLUETOOTH CONNECTIVITY

Seamlessly connect compatible electronic devices via standard Bluetooth connectivity, available on all Gold Wing and Gold Wing Tour models to conveniently enjoy MP3, iPod® and USB integration onboard.

### SMART KEY

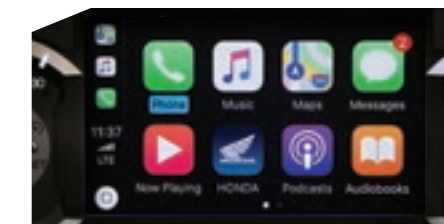
For those seeking convenience and security – the electronic smart key never has to leave your pocket. Every Gold Wing model uses a proximity smart key system to conveniently open storage compartments and start the bike at the touch of a button.



U.S. model shown

### 7-INCH NAVIGATION & AUDIO DISPLAY

The Gold Wing and Gold Wing Tour models feature a dashboard, with an intuitive 7-inch LCD display, housing a Navigation system with premium audio and a host of technologies.



### APPLE CARPLAY™ WITH SIRI®

Take the things you want to do with your compatible iPhone® and put them right on the built-in Gold Wing display screen with Apple CarPlay™. Use apps, get directions, make calls, send and receive messages, and listen to music through onboard controls or take advantage of Siri® Voice Recognition.



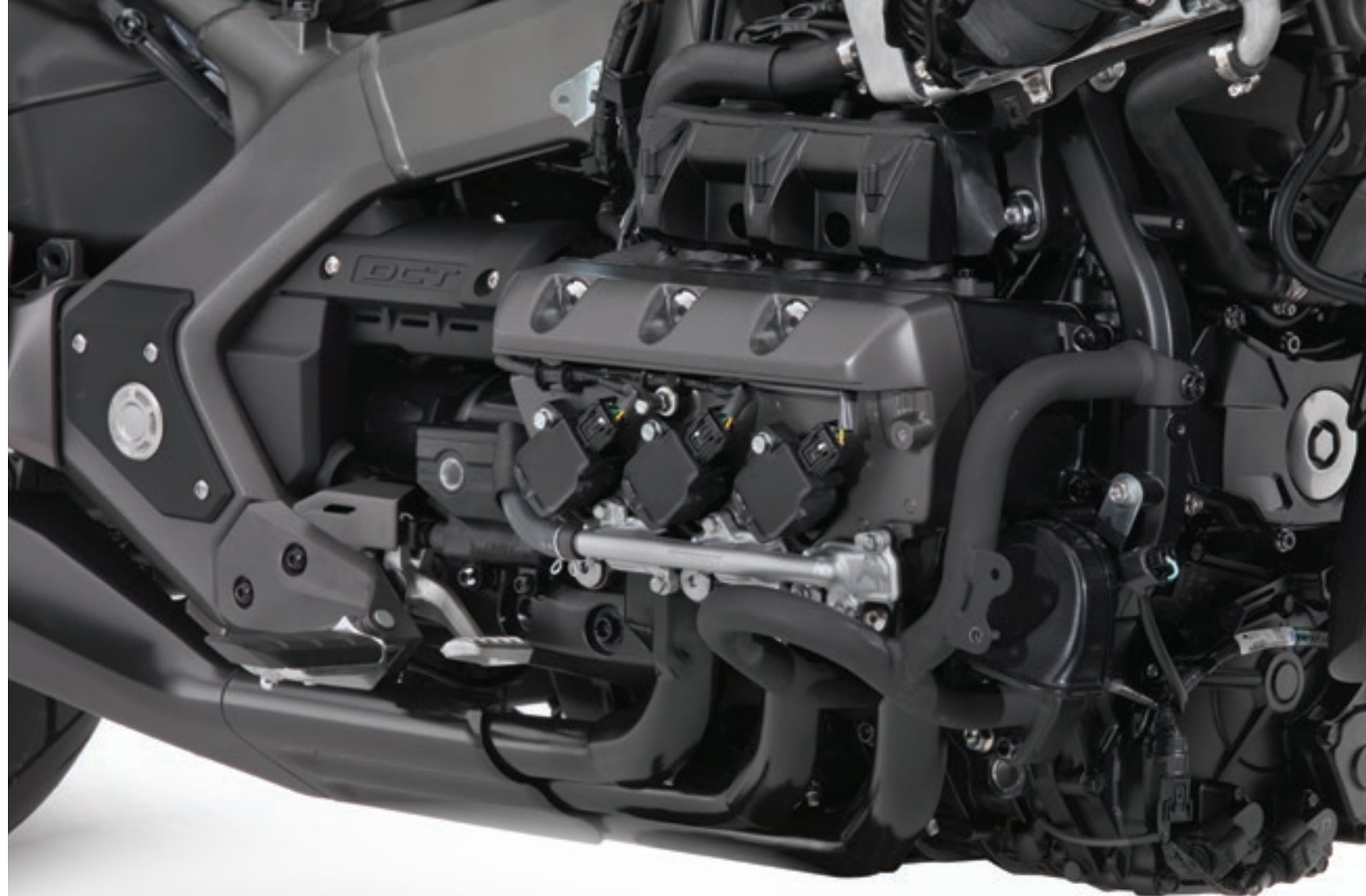
### AIRBAG SYSTEM

There's nothing else like it in all of motorcycling. Tucked unobtrusively behind a panel on the fully equipped Gold Wing Tour DCT Airbag model, the airbag system is engineered to inflate if sensors detect serious frontal impact or a collision in progress.



# LEGENDARY PERFORMANCE

Famously smooth and plenty powerful, the iconic horizontally opposed six-cylinder engine remains at the chest-pounding centre of the Gold Wing. The engine and powertrain have been upgraded from the last generation to be more compact, fuel efficient and versatile in real-world riding applications, while also increasing overall power, response and agility. Another leap forward in Gold Wing performance comes from the introduction of a throttle-by-wire system, available Honda Selectable Torque Control (HSTC) and selectable riding modes available on all Gold Wing models. Featuring four individual settings, it's easy to switch between Sport, Tour, Econ or Rain modes to automatically adjust to riding conditions. The intake and exhaust systems have also been tuned for touring, with more power and torque, while creating a distinct Gold Wing rumble you can't wait to hear open up.



### RESPONSIVE ENGINE AND POWERTRAIN

The Gold Wing is powered by a flat six-cylinder motor with four valve heads, offering linear power designed to deliver an incredibly responsive touring experience on the open road.

### FORWARD / REVERSE WALKING SPEED MODES FUNCTION

The Gold Wing maintains its previous walking speed reverse mode function, but also features a walking speed forward mode function, only available on DCT-equipped models.



### ADVANCED RIDE TECHNOLOGY

The true moto enthusiast will appreciate the responsive throttle-by-wire and traction of Honda Selectable Torque Control (HSTC). Plus, long distance rides are more comfortable, with cruise control, heated grips and the Gold Wing Tour's front and rear heated seats (including rear backrest). Available on Tour Models only.



### TRANSMISSION

The Gold Wing offers a choice between a more traditional six-speed manual transmission, and a technologically-advanced seven-speed Dual-Clutch Transmission (DCT) – making the iconic Gold Wing a truly groundbreaking touring bike.



### SELECTABLE RIDING MODES

Switch between four selectable riding modes to easily find the power and performance that matches your preferred riding style or road conditions. Choose between Sport, Tour, Econ or Rain modes to automatically adjust throttle response, suspension, braking settings, torque control and even shift schedule on DCT models.



## JOIN THE RIDE TO **THE FUTURE**

Riding a motorcycle is all about the feeling of freedom and thrill of the ride. The Gold Wing Tour equipped with third-generation Honda Dual-Clutch Transmission (DCT) represents our ultimate in both unmatched freedom and modern performance.

As the name Dual-Clutch would indicate, Honda DCT uses two clutches controlled by sophisticated electronics and hydraulics. One clutch, which rides on a hollow outer shaft, controls odd-numbered gear sets (1, 3, 5, 7); the other clutch rides on an inner shaft and controls even-numbered gear sets (2, 4, 6). Multiple gears are simultaneously engaged so that you're constantly prepared for the next shift. Data collected by a series of sensors is processed using an advanced algorithm to determine when the shift-control motor should electronically trigger gear changes. At those moments, one clutch disengages, and the other clutch is already engaged, resulting in shifts that are quick, smooth and seamless.

Honda is the powersports leader in Dual-Clutch Transmissions, having debuted it on the 2010 VFR1200F motorcycle and adapted, refined and expanded it to other bikes since — including the award-winning Africa Twin — and premium ATVs and rugged Side-by-Side vehicles.



The third-generation seven-speed DCT can be found in the Gold Wing Tour, but it is based on the same proven engineering technology you can count on. The groundbreaking seven-speed Honda DCT not only helps you ride easy and enjoy your motorcycle more, but also more importantly frees you up from having to deal with a hand-operated clutch or manually changing gears, which allows you to stay more focused on the adventure ahead. It lets you be in the moment when you ride, and once you try it, you'll see just how much more you enjoy riding and how little you miss shifting. Honda DCT is engineered to be the start of your best ride ever.

While both the manual transmission and the DCT version on the Gold Wing have the same final-drive ratio in top gear, the additional seventh gear in the DCT allows the lower gears to be more tightly spaced, resulting in less engine-speed drop when switching gears.

Aside from functional differences, the Honda DCT-equipped Gold Wing Tour maintains the same direct shift feel as traditional manual transmission models, yet delivers quieter shifts and frees you from clutch- and gear-changing duty — creating a new dimension of motorcycle touring and convenience you simply must experience for yourself.



REVOLUTIONARY FLAGSHIP  
**PERFORMANCE**

Designed to push the limits of touring and adventure beyond anything imagined, the fully loaded flagship Gold Wing Tour DCT Airbag delivers virtually every feature you could imagine in a luxurious touring package.



Passionately shaped from every angle and expertly engineered from the inside out, it represents a modern twist to the classic Gold Wing. Today's generation of Gold Wing bikes continue to shine—as strong performance tourers, they are equipped with integrated saddlebags and a top case, as well as a tall adjustable electric windscreen, premium audio system with navigation and electronically adjustable suspension, plus upgraded stitching and special inserts on the side panels.

The Gold Wing Tour DCT Airbag model features a revolutionary Honda seven-speed Dual-Clutch Transmission (DCT) designed with long-distance touring in mind. Using two clutches controlled by sophisticated electronics and hydraulics to change gears quicker and more smoothly than a traditional

manual transmission, it easily takes on clutch and shifting operations to allow more rider focus on acceleration, cornering and braking.

As the first motorcycle manufacturer to outfit a two-wheel model with an airbag back in 2006, the Gold Wing Tour DCT Airbag model — as its name would imply — comes equipped with an innovative Honda airbag system that is engineered to deploy in the event of a frontal collision.

Known for packing a powerful combination of advanced technology and game-changing performance, it's an experience like nothing you've felt before. After sitting in the saddle, you'll know exactly why it's held such legendary status for over 40 years and counting.



Equipped with an innovative Honda airbag system.



Designed with long-distance touring in mind.

**COLOUR**



Candy Ardent Red /  
Darkness Black Metallic (2 - Tone)





DISCOVER  
**TOURING FREEDOM**

The well-equipped Gold Wing Tour has been 44 years in the making—engineered to enhance every road travelled along life's journey. Carefully packaged and built from the road up, the Gold Wing Tour is a fully dressed tourer, complete with trunk storage.



With a choice between a traditional six-speed manual transmission or a cutting-edge seven-speed Dual-Clutch Transmission (DCT) — the iconic Gold Wing Tour is one of the most groundbreaking motorcycles in its class.

The agile body of the Gold Wing is now up to 39 kg (85 lb.) lighter than the previous generation and continues to be equipped with the latest in technology, including Apple CarPlay™ integration and selectable riding modes.

Capitalizing on the lean and sporty stature of the Gold Wing, the luggage has been redesigned with sweeping integrated saddlebags that offer plenty of storage in the rear luggage box. It's time to discover one of the most incredible touring motorcycles of its kind. After one ride, you'll know why it's nothing short of legendary.



A fully-dressed tourer, designed and equipped to maximize your travel experience.



Luggage has been designed with sweeping integrated storage. previous model shown

**COLOURS**



Pearl Hawkeye Blue



Darkness Black Metallic



EXPERIENCE  
**LEGENDARY  
STATUS**

The open road is calling and there's only one way to answer it: the Gold Wing. Lighter, more compact and technologically advanced than last generation's, the standard Gold Wing has all the prerequisites of an incredible touring bike and even a few pleasant surprises hidden up its sleeve.



Featuring a stripped-down style with attractive saddlebags and no rear trunk, this aggressive design with blacked-out components creates a more menacing appearance compared to the Gold Wing Tour.

The overall design of the Gold Wing emphasizes the bike's legacy of performance and innovation, dating all the way back to its debut in 1975 — which forever changed the face of motorcycle touring. Its sharper lines hint at the impressive handling and addictive six-cylinder engine lurking underneath, and the brilliantly bright LED-formed "wing line" headlights pay homage to Gold Wing models of the past.

The latest generation of standard Gold Wing not only changes how you'll enjoy motorcycle touring, but also the way you'll think about touring on a motorcycle, period. Performance should not give way to comfort, and the Gold Wing is proof that you can truly have it all.



Stripped-down style with attractive saddlebags and no rear trunk.

**COLOURS**



Candy Ardent Red



Darkness Black Metallic



Brilliantly bright LED-formed "wing line" headlights.

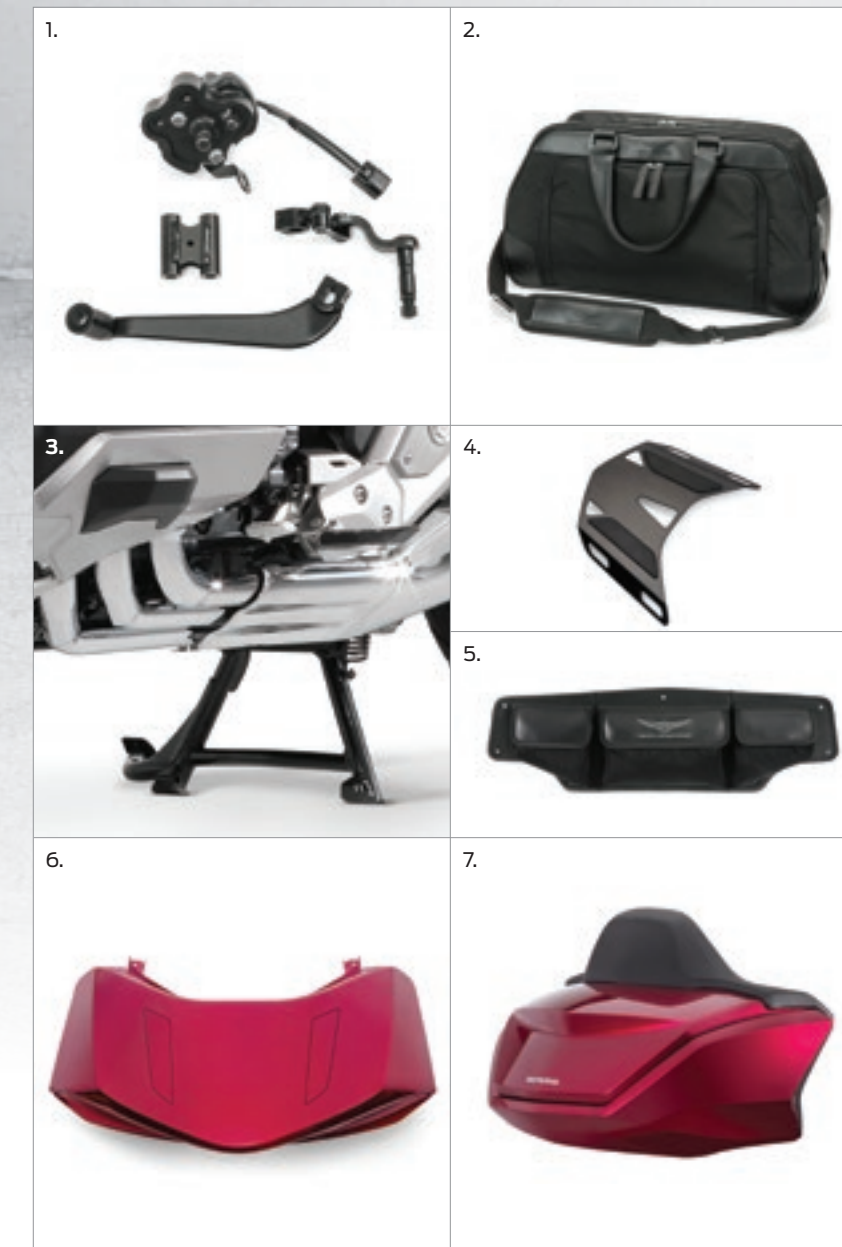


MAKE IT YOUR BIKE,  
**YOUR WAY**

Start with a Gold Wing and then start exploring, with a lengthy list of Honda Genuine Accessories designed to reflect a style that is all your own. It's time to turn your imagination into reality and make a statement on the streets.



## UTILITY ACCESSORIES



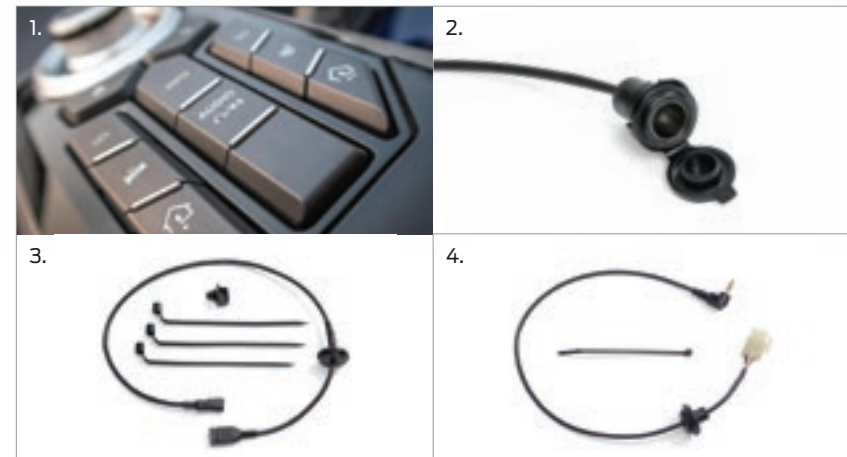
	Gold Wing	Gold Wing Tour	Gold Wing Tour DCT	Gold Wing Tour DCT Airbag
<b>1. DCT PEDAL SHIFTER</b> - On models equipped with DCT, it provides the option of foot shifting.			✓	✓
<b>2. INNER BAG, TRUNK</b> - Convenient abrasion-resistant ballistic nylon trunk liner makes packing easier and helps protect your belongings when travelling. Features reinforced carry handles, shoulder strap, easy-access outer zip for in-trunk use, and Gold Wing logo zipper pulls.		✓	✓	✓
<b>3. MAIN STAND</b> - Sturdy stand provides more parking options on variable ground surfaces, eases maintenance access, and simplifies working on the rear wheel.	✓	STD	STD	STD
<b>4. REAR CARRIER</b> - Fully functional design features a premium black finish with rubber inserts for improved appearance while adding up to 3 kg (6.6 lb.) of carrying capacity.	✓			
<b>5. TRUNK LID ORGANIZER</b> - Helps keep your trunk organized with convenient storage pockets for smaller items.		✓	✓	✓
<b>6. DELETE TRUNK</b> - Colour-matched bodywork for trunk removal on Gold Wing Tour. Requires Base Delete Trunk kit.		✓	✓	✓
<b>7. ADD TRUNK</b> - Colour-matched bodywork for trunk installation on Gold Wing. For an additional 50 litres of storage space. Requires Trunk Installation Kit.	✓			

## UTILITY ACCESSORIES CONT.



	Gold Wing	Gold Wing Tour	Gold Wing Tour DCT	Gold Wing Tour DCT Airbag
<b>8. INNER BAG, SADDLEBAG</b> - Convenient abrasion-resistant ballistic nylon saddlebag liners make packing easier and help protect your belongings when travelling. Features reinforced carry handles and Gold Wing logo zipper pulls for ease of use.	✓	✓	✓	✓
<b>9. MAT, LEFT AND RIGHT SADDLEBAG</b> - Plush premium-quality carpeting with slip-resistant backing, embroidered with Gold Wing logo for your saddlebag.	✓	✓	✓	✓
<b>10. MAT, LEFT SADDLEBAG FOR AMP</b> - Plush premium-quality carpeting with slip-resistant backing, embroidered with Gold Wing logo for your saddlebag. For use with Power Amplifier and Speaker Kit.	✓	✓	✓	✓
<b>11. MAT, REAR TRUNK</b> - Plush premium-quality carpeting with slip-resistant backing, embroidered with Gold Wing logo for your trunk.		✓	✓	✓
<b>12. TRUNK RACK (CHROME)</b> - Adds style and functionality, featuring a chrome-plated steel rack with rubber inserts for improved appearance while adding up to 2.3 kg (5 lb.) of carrying capacity.		✓	✓	✓

## ELECTRICAL ACCESSORIES



	Gold Wing	Gold Wing Tour	Gold Wing Tour DCT	Gold Wing Tour DCT Airbag
<b>1. HOMELINK™ &amp; ATTACHMENT KIT</b> - Provides the convenience of operating two different garage openers from your motorcycle.	✓	✓	✓	✓
<b>2. ACCESSORY SOCKET &amp; ATTACHMENT KIT</b> - 12 V DC electrical socket provides power for additional electrical equipment.	✓	✓	✓	✓
<b>3. USB CORD &amp; ATTACHMENT</b> - Provides USB 2.0 connection that installs in the left saddlebag.	✓	✓	✓	✓
<b>4. AUX CORD</b> - Provides auxiliary connection that can be installed inside the left saddlebag on Gold Wing or inside the trunk on Gold Wing Tour.	✓	✓	✓	✓

Previous model year shown

## AUDIO ACCESSORIES



	Gold Wing	Gold Wing Tour	Gold Wing Tour DCT	Gold Wing Tour DCT Airbag
<b>1. SIRIUSXM® ANTENNA</b> - SiriusXM® satellite antenna specifically designed to interface with your motorcycle (requires SiriusXM® subscription activation to use). Includes 90 days of SiriusXM® All Access Plan with antenna purchase and activation on all 2019 models.	✓	✓	✓	✓
<b>2. PASS AUDIO SWITCH &amp; ATTACHMENT</b> - Allows your passenger to adjust the volume, source and track.	✓	✓	✓	✓
<b>3. CB RADIO &amp; ATTACHMENT</b> - Integrated receiver has 40 channels and is enclosed in a waterproof housing. Requires CB Antenna and CB Switch.		✓	✓	✓
<b>4. CB SWITCH &amp; ATTACHMENT</b> - Allows rider to select desired CB channel and adjust squelch. Requires CB Radio and CB Antenna.		✓	✓	✓
<b>5. POWER AMP &amp; ATTACHMENT</b> - Includes high-output 4-channel 220-watt amplifier and four upgraded 55-watt 4-inch speakers. Specifically designed for your motorcycle to provide clean and crisp music for the ultimate audio experience on the open road. Requires Rear Speaker Attachment Kit for Gold Wing models.	✓	✓	✓	✓
<b>6. PASS CB SWITCH &amp; ATTACHMENT</b> - Allows passenger "push-to-talk" communication.		✓	✓	✓
<b>7. REAR SPEAKER</b> - Two 25-watt 4-inch speakers allow you to expand the audio system to four speakers on your Gold Wing. Requires Rear Speaker Attachment Kit.	✓			

Previous model year shown

## COMFORT ACCESSORIES



	Gold Wing	Gold Wing Tour	Gold Wing Tour DCT	Gold Wing Tour DCT Airbag
1. <b>TALL WINDSCREEN</b> - Taller and wider than our standard equipped windscreen, it provides added protection from the elements.	✓	✓	✓	✓
2. <b>AIR DEFLECTOR Upper &amp; Lower</b> - Specifically designed to improve comfort and match the styling of your motorcycle, the upper deflector provides the ability to direct airflow for various riding conditions, while the lower deflector provides additional wind coverage from the elements.	✓	✓	✓	✓
3. <b>RIDER BACKREST</b> - Custom-styled, high quality backrest with embossed Gold Wing logo provides support for added comfort. Unique design tilts forward for easy passenger seat access.	✓	✓	✓	✓
4. <b>PASSENGER BACKREST</b> - Custom-styled, high quality backrest with embossed Gold Wing logo helps keep your passenger comfortable.	✓			
5. <b>PASSENGER ARMREST</b> - Provides additional support for your passenger for added comfort.		✓	✓	STD

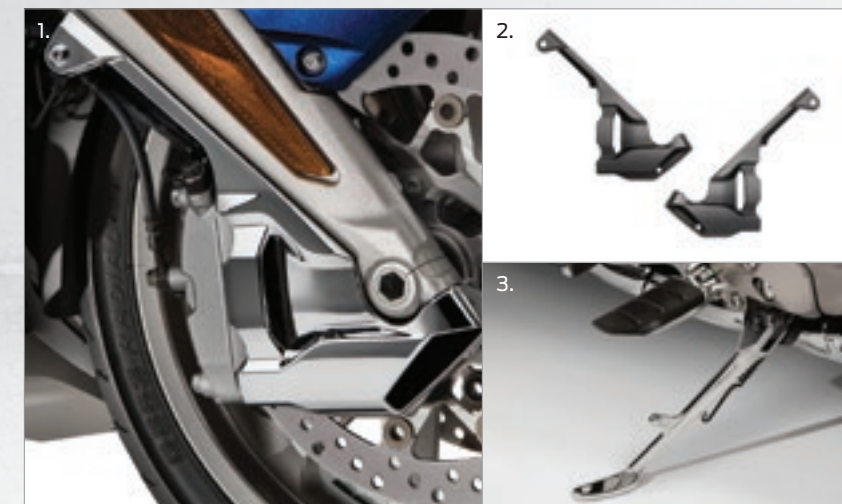
## LIGHTS ACCESSORIES



	Gold Wing	Gold Wing Tour	Gold Wing Tour DCT	Gold Wing Tour DCT Airbag
1. <b>FRONT LED FOG LAMP</b> - Provides brilliant white light for increased rider visibility. Features a hard coated lens and waterproof connectors. Requires LED Fog Light Attachment Kit.	✓	✓	✓	✓
2. <b>ILLUMINATED ENTRY LAMP</b> - Improves visibility around motorcycle when parked with exterior area lighting.	✓	✓	✓	✓
3. <b>TRUNK INNER LAMP</b> - Provides additional trunk lighting to view your trunk's contents. Requires Trunk Sub-Harness.		✓	✓	✓
4. <b>LED HIGH MOUNT STOP</b> - High-mount LED brake light integrates with Chrome Trunk Rack for added visibility and custom appearance. Requires Chrome Trunk Rack and Trunk Sub-Harness.		✓	✓	✓

Previous model year shown

## CUSTOM ACCESSORIES



	Gold Wing	Gold Wing Tour	Gold Wing Tour DCT	Gold Wing Tour DCT Airbag
1. <b>FRONT CALIPER COVER (CHROME)</b> - Chrome-plated, injection-moulded ABS construction covers add custom styling and provide additional airflow to your front calipers for cooling.	✓	✓	✓	✓
2. <b>FRONT CALIPER COVER</b> - Black, injection-moulded ABS construction covers add custom styling and provide additional airflow to your front calipers for cooling.	✓	✓	✓	✓
3. <b>SIDE STAND (CHROME)</b> - Chrome-plated stand adds style to your motorcycle.	✓	✓	✓	✓

## PROTECTION ACCESSORIES

	Gold Wing	Gold Wing Tour	Gold Wing Tour DCT	Gold Wing Tour DCT Airbag
<b>MOTORCYCLE COVER (available in black or grey)</b> - Sturdy, water resistant 300 denier helps protect your motorcycle from the elements. Features a soft inner liner, venting, CB antenna opening, Gold Wing logos and grey piping. Includes storage bag.	✓	✓	✓	✓
<b>HALF MOTORCYCLE COVER (available in black or grey)</b> - Microfibre material is soft, lightweight and compact. Features CB antenna opening, Gold Wing logos and built-in storage bag.		✓	✓	✓

## BATTERY CHARGER


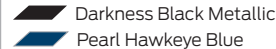
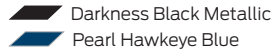
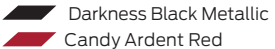


**Pro Honda Battery Charger by TECMATE**  
- 5 Stage program, automatic and safe.  
Two interchangeable connection sets, clamps and a weatherproof snap cord.

	Gold Wing	Gold Wing Tour	Gold Wing Tour DCT	Gold Wing Tour DCT Airbag
	✓	✓	✓	✓

Previous model year shown

**GOLD WING TOUR DCT AIRBAG****GOLD WING TOUR DCT****GOLD WING TOUR****GOLD WING**

<b>Engine type</b>	Liquid-cooled horizontally opposed six-cylinder	Liquid-cooled horizontally opposed six-cylinder	Liquid-cooled horizontally opposed six-cylinder	Liquid-cooled horizontally opposed six-cylinder
<b>Displacement</b>	1,833 cc	1,833 cc	1,833 cc	1,833 cc
<b>Bore &amp; stroke</b>	73 mm x 73 mm	73 mm x 73 mm	73 mm x 73 mm	73 mm x 73 mm
<b>Compression ratio</b>	10.5:1	10.5:1	10.5:1	10.5:1
<b>Valve train</b>	SOHC, Unicam, 4 valves per cylinder	SOHC, Unicam, 4 valves per cylinder	SOHC, Unicam, 4 valves per cylinder	SOHC, Unicam, 4 valves per cylinder
<b>Fuel delivery</b>	PGM-FI electronic fuel injection	PGM-FI electronic fuel injection	PGM-FI electronic fuel injection	PGM-FI electronic fuel injection
<b>Transmission</b>	Seven-speed Dual Clutch Transmission with forward and reverse walking speed modes function	Seven-speed Dual Clutch Transmission with forward and reverse walking speed modes function	Six-speed manual with overdrive and electric low speed reverse function	Six-speed manual with overdrive and electric low speed reverse function
<b>Final drive</b>	Shaft	Shaft	Shaft	Shaft
<b>Front suspension</b>	Double wishbone with Showa shock absorber 110 mm (4.3 in.) travel.	Double wishbone with Showa shock absorber 110 mm (4.3 in.) travel.	Double wishbone with Showa shock absorber 110 mm (4.3 in.) travel.	Double wishbone with Showa shock absorber 110 mm (4.3 in.) travel.
<b>Rear suspension</b>	Pro Arm® Single-sided swingarm and Pro-Link® system including a Showa Shock absorber with electronically controlled spring preload adjustment; 105 mm (4.1 in.) travel	Pro Arm® Single-sided swingarm and Pro-Link® system including a Showa Shock absorber with electronically controlled spring preload adjustment; 105 mm (4.1 in.) travel	Pro Arm® Single-sided swingarm and Pro-Link® system including a Showa Shock absorber with electronically controlled spring preload adjustment; 105 mm (4.1 in.) travel	Pro Arm® Single-sided swingarm and Pro-Link® system including a Showa Shock absorber with manually controlled spring preload adjustment; 105 mm (4.1 in.) travel
<b>Tires</b>	<b>Front:</b> 130/70R - 18 radial <b>Rear:</b> 200/55R - 16 radial	<b>Front:</b> 130/70R - 18 radial <b>Rear:</b> 200/55R - 16 radial	<b>Front:</b> 130/70R - 18 radial <b>Rear:</b> 200/55R - 16 radial	<b>Front:</b> 130/70R - 18 radial <b>Rear:</b> 200/55R - 16 radial
<b>Brakes</b>	<b>Front:</b> dual 320 mm discs with radially mounted six-piston Nissin calipers <b>Rear:</b> single 316 mm disc with three-piston Nissin caliper and electronically controlled dual Combined Brake System (CBS) with ABS	<b>Front:</b> dual 320 mm discs with radially mounted six-piston Nissin calipers <b>Rear:</b> single 316 mm disc with three-piston Nissin caliper and electronically controlled dual Combined Brake System (CBS) with ABS	<b>Front:</b> dual 320 mm discs with radially mounted six-piston Nissin calipers <b>Rear:</b> single 316 mm disc with three-piston Nissin caliper and electronically controlled dual Combined Brake System (CBS) with ABS	<b>Front:</b> dual 320 mm discs with radially mounted six-piston Nissin calipers <b>Rear:</b> single 316 mm disc with three-piston Nissin caliper and electronically controlled dual Combined Brake System (CBS) with ABS
<b>Seat height</b>	745 mm (29.3 in.)	745 mm (29.3 in.)	745 mm (29.3 in.)	745 mm (29.3 in.)
<b>Wheelbase</b>	1,695 mm (66.7 in.)	1,695 mm (66.7 in.)	1,695 mm (66.7 in.)	1,695 mm (66.7 in.)
<b>Curb weight</b>	383 kg (844 lb.)	379 kg (836 lb.)	379 kg (836 lb.)	365 kg (805 lb.)
<b>Fuel capacity</b>	21 litres	21 litres	21 litres	21 litres
<b>Colours</b>	 Candy Ardent Red / Darkness Black Metallic (2 - Tone)	 Darkness Black Metallic / Pearl Hawkeye Blue	 Darkness Black Metallic / Pearl Hawkeye Blue	 Darkness Black Metallic / Candy Ardent Red

®/TM – Trademarks of Honda Canada Inc. or used under licence from Honda Motor Co., Ltd. or third parties.

Riding a motorcycle can be hazardous. For your safety, always wear a helmet, eye protection and protective clothing whenever you ride. Never ride under the influence of drugs or alcohol. Never engage in stunt riding. Inspect your vehicle before riding, read your owner's manual, and Honda recommends that all riders take a rider training course. Always obey all laws, use common sense and respect the rights of others when you ride. Some of the features and technologies described in this publication come with limitations. See owner's manual for complete details. Specifications, descriptions and illustrations contained in this publication are based on information believed to be correct at the time this publication was approved for printing. Although descriptions, specifications, model images, colours and accessories are believed to be correct, accuracy cannot be guaranteed. Errors and omissions excepted. Specifications are subject to change without notice. All specifications in this publication apply only to models sold and registered in Canada by an authorized dealer. Some of the models and/or accessories may not be exactly as shown. Some or all of the accessories described or illustrated in this brochure may not be standard and may be available only at an extra cost. Photographs depict professional riders on closed courses. Visit [honda.ca](http://honda.ca) for additional safety information.

Apple CarPlay™ \*None of the features we describe are intended to replace the driver's responsibility to exercise due care while driving. Drivers should not use handheld devices or operate certain vehicle features unless it is safe and legal to do so. Some features have technological limitations. For additional feature information, limitations and restrictions, please visit [www.honda.ca/disclaimers](http://www.honda.ca/disclaimers) and refer to the vehicle's Owner's Manual. Only compatible with certain devices and operating systems. Gold Wing is not equipped with Wifi Hot Spot. Operation may be dependent upon GPS satellite signal reception and available cellular data and/or voice connection; associated charges (incl. data plans, roaming charges and/or other amounts charged by your wireless carrier) may apply.

© 2019 Honda Canada Inc. All rights reserved.

**FPO FSC LOGO**

GOLDWINGBROCH19E



## Design and innovation – inside and out.

The reasons for choosing Honda go beyond our legendary engines. We have created our reputation through an unwavering focus on durability, quality and reliability. Each Honda product is a reflection of our commitment to motorcycle culture and the strength of community. Let trained Honda service technicians help to keep your motorcycle healthy, using only the finest Honda Genuine Parts, Oils and Chemicals specifically engineered to maintain the original integrity and life of your Honda. Our industry-recognized engineering and exceptional Honda service means you can rest assured that Honda will provide you with exactly what you need to help ensure the best motorcycle performance for years to come.



Plus

## Honda Warranty = Added peace of mind.

Designed to ensure Honda quality care for your motorcycle, Honda Plus Extended Warranty offers flexible coverage selections for the type of protection you need. Whether your Honda motorcycle is new or pre-owned, Honda Plus helps to cover you.

**HONDA**

Financial  
Services

## We make it easier to make it yours!

Honda Canada Finance Inc. (HCFI), o/a Honda Financial Services, was established in 1987 to provide financing options for Canadian consumers. Financing options with competitive rates and flexible terms are available through Honda dealers across Canada.



Honda Motorcycles Canada



@HondaMotoCA





[honda.ca](http://honda.ca)